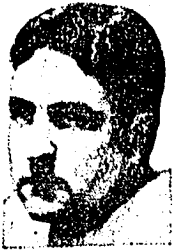


TODAY'S RADIO BROADCASTS

Today's Features

ON W-G-N.

[Chicago Daylight Time.]
The 10 round lightweight non-title boxing match between Ray Robinson and Maxie Shapiro will be reported at 9 p. m. The bout will be described by Don Dunphy and Bill Corum.



Jimmy Evans.

Jimmy Evans, sports authority and former All-American guard from Northwestern University, returns to W-G-N with his program, Football Forecasts, at 6:45 p. m.

At 8:30 p. m. W-G-N and the Mutual Broadcasting system will present the second broadcast of the new comedy-variety show, Three Ring Time. Featured will be Charles Laughton, Milton Berle, Shirley Ross, Bill Goodwin, and Bob Crosby's orchestra.

A running account of the Broad Hollow steeplechase will be given by Bryan Field at 2:30 p. m.

ON OTHER STATIONS.

- 7 p. m.—WBBM—Claudia and Davin.
- 7:30—WMAQ—Auction Quiz.
- 7:30—WMAQ—Information, Please.
- 7:30—WBBM—Proudly We Hall.
- 8—WENR—Vox Pop.
- 8—WMAQ—Waltz Time.
- 8:30—WBBM—First Nighter—Barbara Luddy and Les Tremayne in "Husband Below Deck."
- 8:30—WMAQ—Uncle Walter's Doghouse.
- 9:30—WBBM—Penthouse Party.

ON SHORT WAVE.
[Central daylight saving time.]
BERLIN-7:15 p. m.—News in English: DJB, 11.77 mcr., 25.4 m.; DJZ, 11.80 mcr., 25.4 m.
ROME-9:00 p. m.—News in English: 2R03, 9.83 mcr., 31.1 m.; 2R04, 11.81 mcr., 25.4 m.; 2R05, 15.30 mcr., 10.0 m.
BEILIN-9:30 p. m.—News in English: DJD, 11.77 mcr., 25.4 m.; DJZ, 11.80 mcr., 25.4 m.
LONDON-10:15 p. m.—British Speaks: GSC, 9.58 mcr., 31.0 m.; GSD, 11.75 mcr., 25.5 m.; GSL, 6.11 mcr., 40.1 m.
CHICAGO FREQUENCIES.
W-G-N-720 WJOB-1230
WIND-500 WSBC-1240
WMAQ-670 WSLW-1240
WBBM-730 WEDC-1240
WLIT-820 WNRO-1280
WBS-800 WGES-1390
WENR-890 WHFC-1450
WAAF-950 WHIP-1520
WCFL-1000 W5IC-[FM]
WMBI-1110 45.1 mcr.
WJJD-1160
[*Indicates MBS program.]

MORNING

6:00 A. M.
W-G-N—Farm hour.
WBBM—Farm Service.
6:30 A. M.
WLS—Bulletin Board.
WJJD—Family Bible.
7:00 A. M.
W-G-N—Bill Anson's Morning Serenade.
WCFL—Cheerful Earth.
WMAQ—Suburban hour.
WAAF—Breakfast Express.
WBBM—World Today.
WJJD—Frontiersmen.
7:15 A. M.
WLS—General Store.
WBBM—Musical Clock.
WCFL—Time to Shine.
7:20 A. M.
W-G-N—Billy Repaid.
7:25 A. M.
W-G-N—Nothing but the Truth.
7:30 A. M.
W-G-N—Lanny and Ginger.
WBBM—Wishing Well.
WJJD—Christian Science.
WHIP—Altar Service.
7:35 A. M.
W-G-N—Good-by Carbon.
7:40 A. M.
W-G-N—Brush and Smile.
7:45 A. M.
W-G-N—Music with Flavor.
WLS—Morning Devotions.
WJJD—Weather Bureau.
WCFL—Breakfast Frolic.
8:00 A. M.
W-G-N—Your Morning News.
WJJD—Fun, Inc.
WHIP—Bit of Poland.
WMAQ—Your Neighbor.
WCFL—Breakfast Club.
8:15 A. M.
W-G-N—Gospel Singer.
WBBM—Silverleaf Serenade.
8:30 A. M.
W-G-N—Gladtime Melodies.
WBBM—Moss and Nielson.
WMAQ—Coffee Time.
WIND—Army Enlistment.
WLS—Mac and Bob.
8:45 A. M.
W-G-N—Good Morning prog.
WBBM—Betty Crocker.
WLS—The Rankers.
WMAQ—Songs in Fashion.
WJJD—Song Shop.
8:55 A. M.
W-G-N—Billy Repaid.
9:00 A. M.
W-G-N—Candy Bouquet.
WMAQ—Bess Johnson.
WCFL—Songs of Romance.
WIND—Start Right.
WBBM—By Kathleen Norris.
WLS—Musical Millwheel.
WJOB—Master hour.
WMBI—Community Salute.
9:10 A. M.
WAAF—Canary Serenade.
9:15 A. M.
W-G-N—Frank Luther.
WJJD—Shopping Today.
WMAQ—Ellen Randolph.
WCFL—King's Jesters.
WBBM—Myrt and Marge.
WIND—Army Enlistment.
9:30 A. M.
W-G-N—June Baker.
WJJD—Friday Fling.
WBBM—Stepmother.
WCFL—Leo Reisman.
WMAQ—Morning Moods.
WLS—Breakfast Club.
WIND—Hollywood and Broadway.
9:35 A. M.
W-G-N—Linda's Love.
WBBM—Shopping with the Missus.
WLS—Jane Tucker.
WMAQ—Road of Life.
WIND—Bob and Bonnie.
WJJD—Al Beekwith.
10:00 A. M.
W-G-N—Editor's Daughter.
WMAQ—Marty Marlin.
WCFL—For Women Only.
WAAF—Orchestra Pit.
WIND—Listen Ladies.
WBBM—Treat Time.
WLS—Jack Turner.
WHIP—Lithuanian hour.
WMBI—Organ Moods.
10:15 A. M.
W-G-N—Hearts in Harmony.
WLS—Orchestra.
WMAQ—Man I Married.
WMAQ—Pepper Young.
WJJD—Dick Baker.
WAAF—Morning Ballads.
10:30 A. M.
W-G-N—Bachelor's Children.
WJJD—Ruth Howard.
WMAQ—Lone Journey.
WAAF—Mythical Ballroom.
WBBM—Bright Horizon.
WLS—Julia Blake.
WCFL—Radio Warblers.

10:45 A. M.
W-G-N—Voice of Romance.
WMAQ—David Harum.
WLS—Live Stock Market.
WCFN—Frank Hubbell choir.
WBBM—Aunt Jenny.
11:30 A. M.
*W-G-N—John H. Hughes.
WCFL—String Ensemble.
WMAQ—Hedy and Bob.
WBBM—Kato Smith.
WLS—Martha and Helen.
WJJD—Food Reporter.
11:05 A. M.
WJJD—Listen Ladies.
11:15 A. M.
*W-G-N—This Is Life.
WMAQ—Tina O'Neill.
WBBM—Big Sister.
WJJD—Musical Motorist.
WCFL—Pantry Peekers.
WIND—Weather Bureau.
11:30 A. M.
W-G-N—Quin Ryan, News.
WMAQ—Farm and Home.
WIND—Dick Baker.
WCFL—Alvino Rey.
WBBM—Helen Trent.
WJJD—Safety Court.
WAAF—Rhythm Revue.
11:45 A. M.
W-G-N—Twig Is Bent.
WBBM—Our Gal Sunday.
WCFL—Meet the Folks.
WIND—Randall Atcher.
WAAF—Romantic Melodies.

AFTERNOON

NOON.
W-G-N—Harold Turner.
WIND—At the Movies.
WMAQ—Beautiful Life.
WLS—Homemaker's program.
WAAF—Symphonic hour.
W5IC—Luncheon Music to 1:30.
12:15 P. M.
*W-G-N—Government Girl.
WMAQ—Tunes and Tips.
WBBM—Woman in White.
WIND—Noon Time Melodies.
WCFL—Singin' Sam.
WJJD—Music Pleasure.
WMBI—Midday hour.
12:30 P. M.
*W-G-N—Front Page Farrell.
WJJD—Noonday Service.
WCFL—Danceland.
WBBM—Right to Happiness.
12:45 P. M.
W-G-N—Markets.
WBBM—Road of Life.
WMAQ—Three to Get Ready.
12:50 P. M.
W-G-N—Tune Times.
12:55 P. M.
W-G-N—Billy Repaid.
1:00 P. M.
W-G-N—Don Norman's Date.
WMAQ—Light of the World.
WBBM—Young Dr. Malone.
WCFL—Man on the Street.
1:15 P. M.
W-G-N—Fainted Drama.
WMAQ—Mystery Man.
WJJD—Ben Kantor.
WBBM—Joyce Jordan.
WCFL—Don Artiste.
1:30 P. M.
W-G-N—Marriage Bureau.
WBBM—Fletcher Wilcy.
WHIP—Going Forward.
WIND—Board of Education.
WAAF—Ballroom preview.
WMAQ—Valiant Lady.
WCFL—Guess Who.
WLS—Question Box.
WMBI—Salon Ensemble.
1:45 P. M.
W-G-N—Len Sulvo.
WMAQ—Grimm's Daughter.
WBBM—Kate Hopkins.
WIND—Race Results.
WCFL—Spotlight program.
WAAF—Dance Time.
2:00 P. M.
W-G-N—R. Ginsburgh.
WLS—Orphans of Divorce.
WJJD—Bill Anson.
WMAQ—Against the Storm.
WHIP—We Are Americans.
WAAF—Live Stock Report.
2:15 P. M.
W-G-N—Billy Repaid.
WLS—Amanda.
WAAF—Jimmie Kozak.
WMAQ—Ma Perkins.
WBBM—Song Treasury.
WCFL—Danceland.
2:20 P. M.
W-G-N—Harold Turner.
2:30 P. M.
*W-G-N—Broad Hollow Steeplechase.
WBBM—Meet the Missus.
WMAQ—Guiding Light.
WJJD—Musical Memories.
WLS—John's Other Wife.
WCBD—D. A. E. program.
2:45 P. M.
W-G-N—Carvel Craig.
WMAQ—Vic and Sade.
WBBM—Don Artiste.
WLS—Just Plain Bill.
WCFL—Dance music.
2:55 P. M.
W-G-N—Melody Time.
3:00 P. M.
WENR—Club Matinee.
WMAQ—Buckeye Wife.
WBBM—Lorraine Hall.
WAAF—Mythical Ballroom.
WMBI—Bible School.
3:15 P. M.
*W-G-N—Dick Barries.
WMAQ—Stella Dallas.
WBBM—Adam About Eve.
3:25 P. M.
W-G-N—Billy Repaid.
3:30 P. M.
W-G-N—Bleacher Serenade.
WMAQ—Lorenzo Jones.
WIND—Race results.
WBBM—Army Manuevers.
3:45 P. M.
W-G-N—Leadoff Man.
WENR—Army Manuevers.
WBBM—Burl Ives.
3:55 P. M.
W-G-N—Cubs vs. Cards. Also WCFL, WJJD.
WMAQ—Widder Brown.
4:00 P. M.
WMAQ—Home of the Brave.
WAAF—Tea Time Tunes.
WENR—Yours Truly.

WHFC—Selective Service.
WBBM—Marty Marlin.
4:15 P. M.
WBBM—Record Rhythm.
WMAQ—Parties Faces Life.
WAAF—Army Facts.
4:30 P. M.
WBBM—The O'Neills.
WMAQ—The Abbotts.
WENR—Most of Life.
4:45 P. M.
WMAQ—Lone Journey.
WBBM—Just Entertainment
WENR—Midstream.
5:00 P. M.
WBBM—Painted Dreams.
WBBM—Elizabeth Hart.
WMAQ—Dancing Sisters.
5:15 P. M.
WBBM—Hedda Hopper.
WENR—The Bartons.
WMAQ—Musical Memorabilia.
WMBI—Three Stripes.
5:30 P. M.
WMAQ—Jack Armstrong.
WENR—Drama Behind News.
WAAF—Hit Tunes.
5:45 P. M.
W-G-N—Swing It.
WBBM—World Today.
WBBM—Chapel Hymns.
WENR—Wings for Super.
WAAF—Friday Serenade.
WIND—Eddie Chase.
5:55 P. M.
W-G-N—Billy Repaid.

EVENING

6:00 P. M.
W-G-N—Your Twilight Serenade.
WENR—Radio Fanfare.
WMAQ—Sweet and Spanish.
WBBM—Fingertines.
WENR—Songs for Super.
WAAF—Rhythm Revue.
W5IC—Dinner Music at 8.
WIND—I Hear Music.
6:15 P. M.
W-G-N—Bob Elson.
WCFL—Dinner Concert.
WJJD—Twilight Rhythms.
WENR—Radio Magic.
WIND—Musical Follies.
6:30 P. M.
W-G-N—Clifton Utley.
WBBM—Barrel of Fun.
WENR—Songs for Super.
WJJD—Melody Market.
6:45 P. M.
W-G-N—Jimmy Evans.
WLS—Red Cross program.
WHFC—Irish hour.
7:00 P. M.
*W-G-N—Griff Williams.
WMAQ—Lucille Manners.
WBBM—Claudia and David.
WLS—Auction Quiz.
WIND—Baseball.
WJJD—Superstition Frolle.
7:15 P. M.
WCFL—Mission Melodies.
7:30 P. M.
W-G-N—Lone Ranger.
WLS—Death Valley Days.
WMAQ—Information, Please.
WCFL—Make It and Take It.
WBBM—Proudly We Hall.
7:45 P. M.
WCFL—Labor Flashes.
WJOB—Football Game.
8:00 P. M.
*W-G-N—Gabriel Heatter.
WMAQ—Waltz Time.
WIND—Ben Bernie.
WBBM—Playhouse.
WENR—Vox Pop.
WCFL—Novena Service.
8:15 P. M.
*W-G-N—Quin Ryan's News.
WIND—Adventure Time.
8:30 P. M.
*W-G-N—Three Ring Time.
WBBM—First Nighter.
WMAQ—Doghouse.
8:55 P. M.
WBBM—Ginny Simms.
9:00 P. M.
*W-G-N—Hobinson vs. Shapiro.
WBBM—Hollywood Premiere.
WMAQ—Wings of Destiny.
WENR—Romance and Rhythm.
9:15 P. M.
WCFL—Varieties.
9:30 P. M.
WBBM—Penthouse Party.
WCFL—Danceland.
WENR—Piano Quartet.
9:45 P. M.
W-G-N—Shoot the Works.
WENR—Story Dramas.
10:00 P. M.
WBBM—Amos 'n' Andy.
WMAQ—Pleasure Time.
WIND—Symphonic Hour.
10:15 P. M.
W-G-N—Chicago at Night.
WBBM—Lanny Ross.
10:30 P. M.
W-G-N—Don McGhinney.
WMAQ—Variety Time.
WCFL—Music Lovers' prog.
WJOB—Midnight Express.
10:45 P. M.
W-G-N—Modern Design Music.
WBBM—Man on the Street.
11:00 P. M.
W-G-N—Billy Repaid.
WIND—Teddy Powell.
W5IC—Dance Music.
WMAQ—Lionel Hampton.
WBBM—Charles Spivak.
11:05 P. M.
*W-G-N—Harry James.
11:30 P. M.
W-G-N—Lawrence Welk.
WBBM—Bob Grant.
WCFL—Club Midnight.
WENR—Gene Krupa.
11:45 P. M.
*W-G-N—Dick Jurkens.
MIDNIGHT.
W-G-N—Art Jarrett.
WENR—Music You Want.
WBBM—Midnight Jamboree.
WIND—Nite Watch.
WCFL—1,000 club.
WBBM—Red Nichol.
12:30 A. M.
*W-G-N—Jimmy Joy.
WENR—Lionel Hampton.
1:00 A. M.
*W-G-N—Griff Williams.
WCFL—Morning Matinee.
1:30 A. M.
W-G-N—News Roundup.